



PRINT DATA REQUIREMENTS

Your accompanying catalogue for optimal
print data creation and a smooth production process

CONTENTS

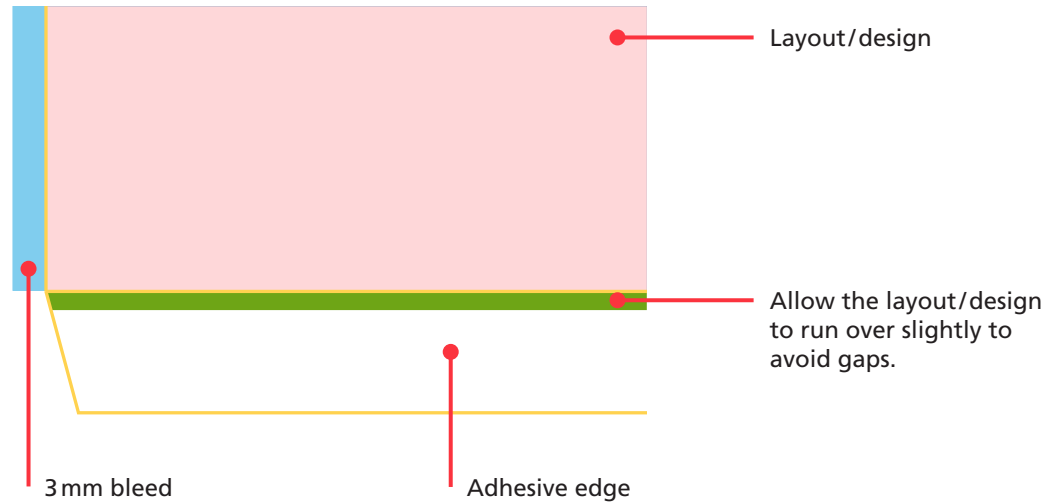
- 03** Bleed
Images
- 04** Data formats
- 05** Create compressed file MAC
Create compressed file Windows
- 06** Data transfer
Data check
Colour
- 07** Flexographic printing
Graphics
- 08** Offset printing
Dieline
- 09** Barcode
Fonts and lines
- 10** Transparency
Overprinting
Finishings

PAWI Packaging Schweiz AG
Grüzefeldstrasse 63
CH-8404 Winterthur
T +41 52 234 42 42
info@pawi.com
www.pawi.com

PAWI Packaging Deutschland GmbH
Lise-Meitner-Straße 4
D-78224 Singen
T +49 77 31 925 88 0
info@pawi.com
www.pawi.com

BLEED

The bleed is generally 3 mm. The adhesive edge must always be kept free of inks and coatings. Of course, we will notice any trapping that occurs in these areas.



IMAGES

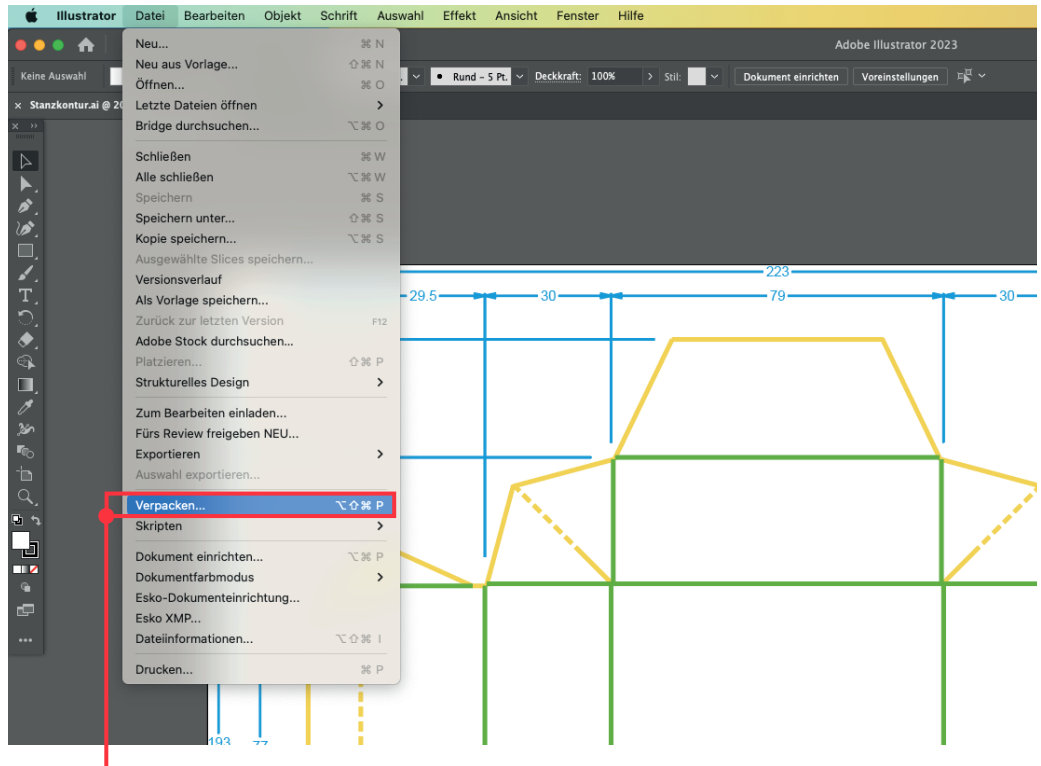
- 300dpi resolution for colour and greyscale images
- 1200dpi resolution for bar graphics

Image data can also be embedded in TIFF format, which can then be embedded in the CMYK colour space. Colour mode: CMYK (RGB and RGB with ICC profiles)

DATA FORMATS

Printed material should be supplied as a digital template. Complaints regarding print quality are excluded for paper templates that need to be scanned.

Please provide your data as an **open, packaged and compressed Illustrator document**:



In Illustrator, select File/Packaging, then select the desired location and folder name (document name):

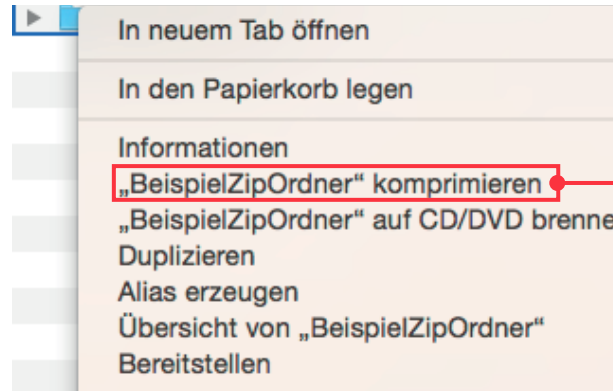


The storage location can be changed manually here.

Select all checkboxes then pack.



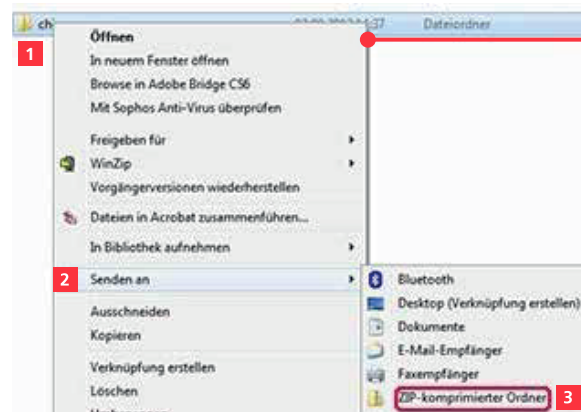
CREATE COMPRESSED FILE MAC



Select this option to compress the folder at its current location.



CREATE COMPRESSED FILE WINDOWS



1. Right-click on the folder to open the context menu.
2. Move the mouse pointer to „Send to ...“ in the drop-down menu.
3. Click on „ZIP-compressed folder“.
4. The finished ZIP archive can now be found in the same parent folder as the original folder.

If it is not possible for you to deliver the data openly, send your print data using the following PDF standards:

- ISO 12647-1 (general)
- ISO 12647-2 (offset printing)
- ISO 12647-6 (flexographic printing)
- ISO 12647-7 (digital proof)
- Offset set: ICC profile: ISO coated v3 and ISO uncoated v3
- Offset set: ISO standard 12647

Further links:

www.pdfx-ready.ch

www.gwg.org (ISO-Norm 15930)

DATA TRANSFER

Send your print data to the email address of our sales advisor or specifying the order number to: daten@pawi.com

For print data over 50 MB, we recommend sending your print data to us via FTP, Dropbox or the online service www.wetransfer.com.

You must always send files with the order number in the file name, avoiding any umlauts, blanks or special characters.

DATA CHECK

We will check the supplied data in a standardised way. If we find any errors, we will get in touch with you.

You can then decide whether to re-submit the data or whether we should make the corrections for you. We may charge for this additional work.

COLOUR

Colour space

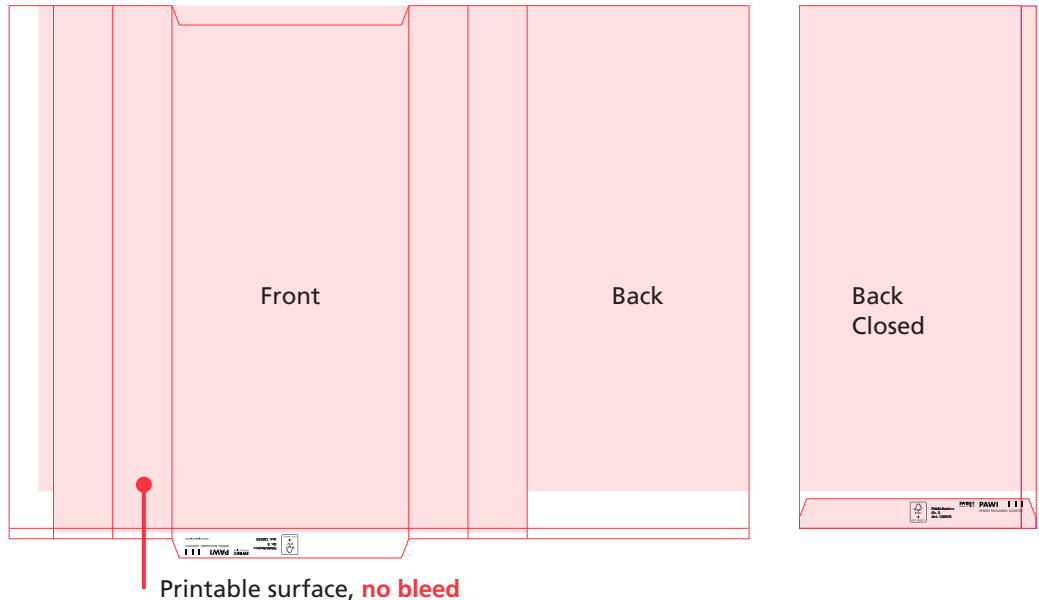
Only HKS, CMYK and Pantone colours can be used.

Area coverage

The total ink application should not exceed 320% on coated paper, and 280% on uncoated paper. First printing from 1% (3% for flexo).

FLEXOGRAPHIC PRINTING

Flexographic printing is aimed at flexible packaging. Please note register tolerances of up to +/- 1–2mm per colour are possible due to the printing process. Especially with reverse printing, fine lines, halftones and fonts may run or break off during plate preparation. This can result in discolouration in the overlapping areas (trapping area).



GRAPHICS

- Minimum line width positive: 0.1 mm
- Minimum line width negative/multi-coloured: 0.15 mm
- Minimum distance between printed image and dieline: 2 mm
- Trapping: 0.05 mm
(can also be carried out by us at no extra expense)
- 1200 dpi resolution for bar graphics

Do not convert vector data to pixel data.

Colour mode: CMYK (RGB and RGB with ICC profiles) Offset printing

The colour composition in the file must contain only the required colours.

Only ISO-standard Pantone, HKS and CMYK colour saturations are permitted. Please notify in advance of any deviations from the house colours. Inks have different levels of efficacy depending on the printing material, so please take this into account.

- Special colours with correct Pantone designation
- Delete unused colours
- Overprint/knock-out settings must be defined
- We will calculate trapping on the RIP without requiring special instructions from you.

OFFSET PRINTING

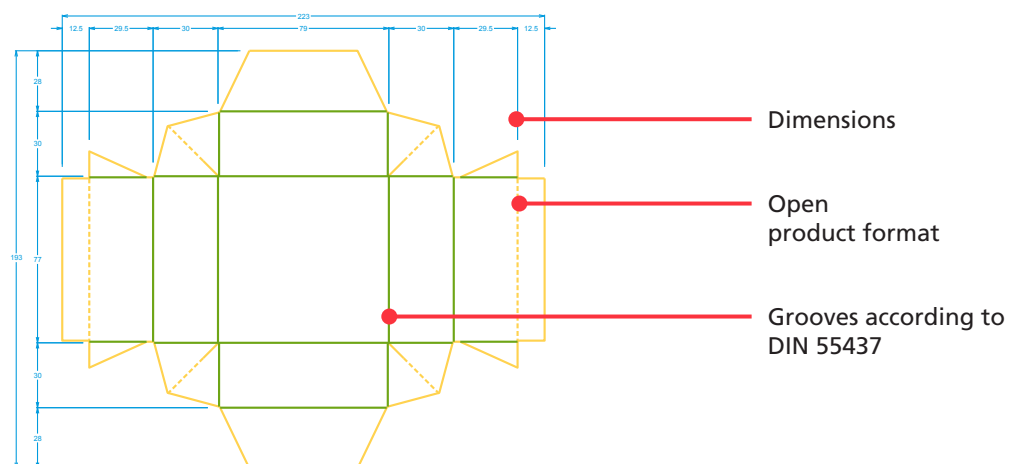
The colour composition in the file must contain only the required colours. Only ISO-standard Pantone, HKS and CMYK colour saturations are permitted. Please notify in advance of any deviations from the house colours. The colours have different levels of efficacy depending on the printing material, so please take this into account.

- Special colours with correct Pantone designation
- Delete unused colours
- Overprint/knock-out settings must be defined
- We will calculate overprinting and underprinting (trapping) on the RIP without requiring special instructions from you.

DIELINE

The dieline on a 1:1 scale that we provide must exclusively be used to create the print template.

- Dieline (vector graphic) on its own, locked editing layer with solid colour 'contour' and layer name 'cutting die'.
- Object attribute set to overprint.
- The L x B x H dimensions of the folding box determine the entire dimensions of the product..
- There must not be any auxiliary lines or dimensions within the contour, otherwise they will be printed.
- If the product (packaging) is to include embossings, coatings, grooves or scoring, then this information must be included in the dieline.
- Scoring lines must not be included as printing graphics or lines in the print data.



BARCODE

For barcode verification according to ISO 15416, a qualification level of from 4 (very good) to 0 (failed) must be agreed with the customer. The quality levels shall include seven parameters:

- Decoding
- Edge contrast
- Symbol contrast
- Modulation
- Minimum reflection
- Defects
- Decodability

The worst result of the seven parameters determines the overall final result for quality assessment.

FONTS AND LINES

All fonts and characters used in the document must be supplied or converted into paths.

- Minimum font size: $x = 1.2 \text{ mm}$
- Minimum line width positive: 0.1 mm (flexo 0.4 mm)
- Minimum line width negative/multi-coloured: 0.15 mm (flexo 0.4 mm)
- Minimum distance between printed image and dieline: 2 mm
- Trapping: 0.05 mm (flexo 0.3 mm)
(can also be carried out by us at no extra expense)

TRANSPARENCY

Use the PDF/X-4 standard to maintain transparency.

OVERPRINTING

The overprint/knock-out settings must be defined in the document.

FINISH

Finishes (coatings, embossings, etc.) must be in a non-printing colour and clearly labelled.